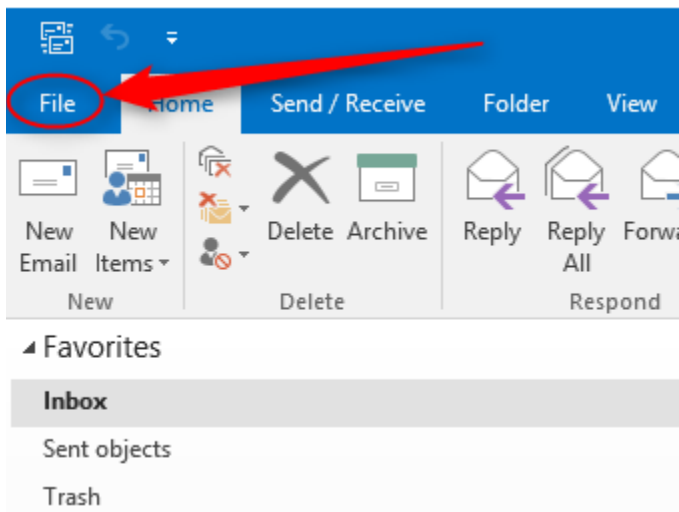
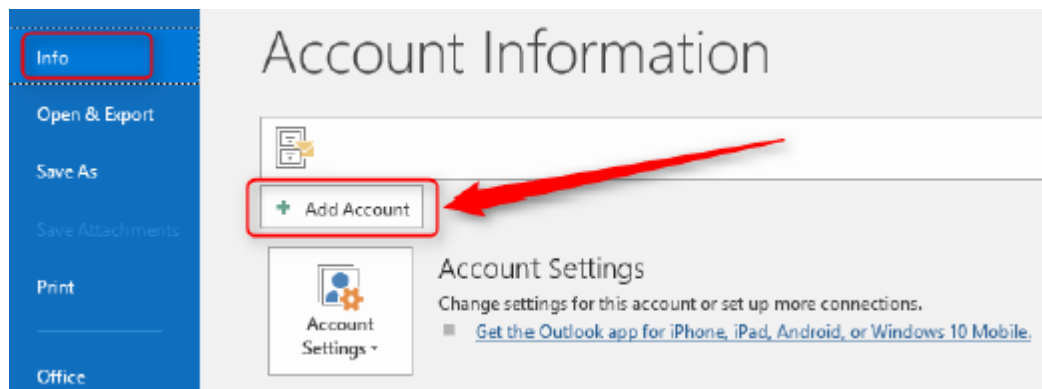


SMARTER MAIL setup pop3 account with SSL in Microsoft Outlook 2016

1. Launch your Microsoft Outlook 2016.
2. From Top left menu, click on **FILE** > make sure that **Info** is selected on the left > click on



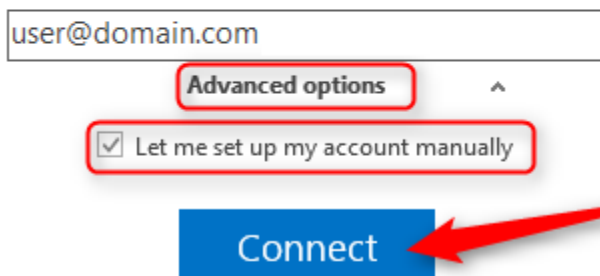
Add Account.



3. Enter your full email address > click on "**Advanced options**" > tick the checkbox "**Let me set up my account manually**" then Connect.

Welcome to Outlook

Enter an email address to add your account.



The screenshot shows the Outlook account setup form. It includes an email address input field containing 'user@domain.com'. Below the field is an 'Advanced options' button, highlighted with a red box. Underneath is a checkbox labeled 'Let me set up my account manually', which is checked and also highlighted with a red box. At the bottom is a blue 'Connect' button, pointed to by a red arrow.

Incoming mail

Server Port

This server requires an encrypted connection (SSL/TLS)

Require logon using Secure Password Authentication (SPA)

Outgoing mail

Server Port

Encryption method

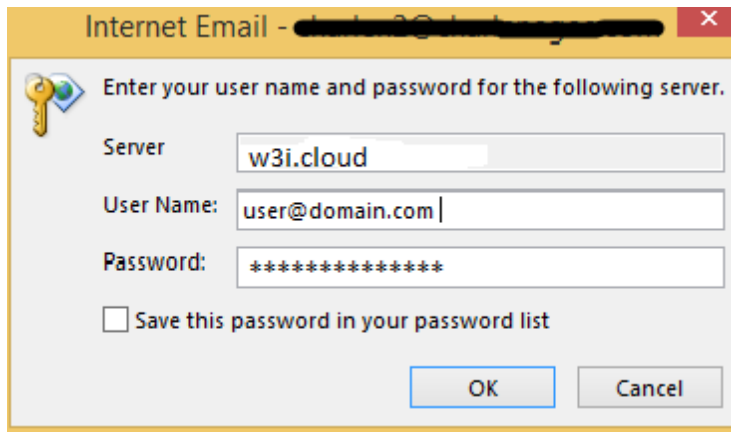
Require logon using Secure Password Authentication (SPA)

Message delivery

Use an existing data file



8. Enter password for your email address then Click OK.



9. Account setup is complete. Lastly, check the checkbox if you want to setup outlook mobile on your phone then click OK.

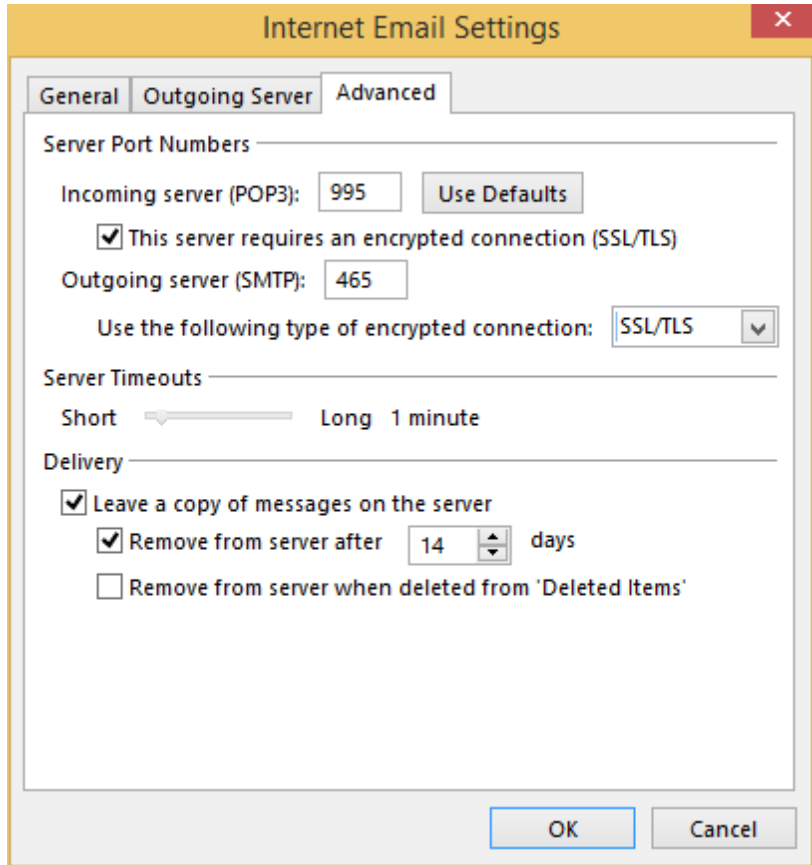
Your email account now is ready to use.

Adding [REDACTED]
Account setup is complete

OK

Set up Outlook Mobile on my phone, too

Note: If you wish to edit the Account Setting , you may proceed with below step



Internet Email Settings

General | **Outgoing Server** | Advanced

Server Port Numbers

Incoming server (POP3): 995 Use Defaults

This server requires an encrypted connection (SSL/TLS)

Outgoing server (SMTP): 465

Use the following type of encrypted connection: SSL/TLS

Server Timeouts

Short ————— Long 1 minute

Delivery

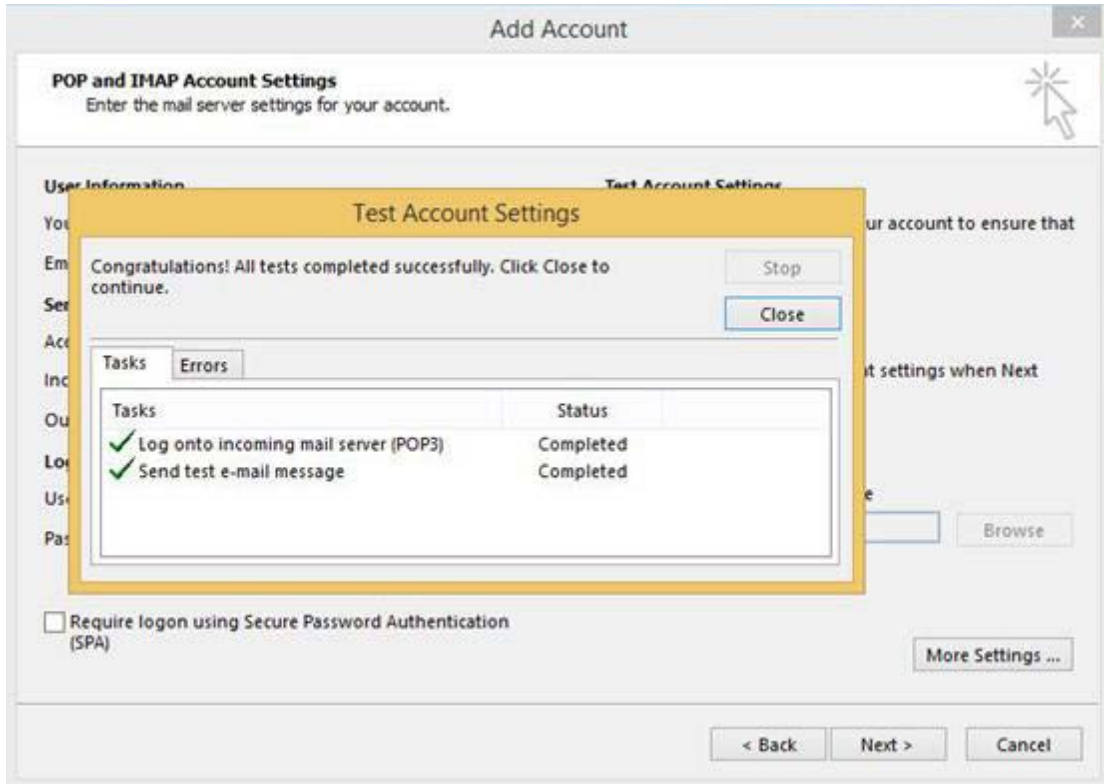
Leave a copy of messages on the server

Remove from server after 14 days

Remove from server when deleted from 'Deleted Items'

OK Cancel

5. After edit click OK, it will return to the Add account setting. Click on Next and click on Close after the Test Account Settings has been done.



6. Your email account in Microsoft Outlook 2016 is ready to use.



روتدج د.م.م.
ROUTEDGE

Accredited Registrar for

.qa, .com.qa, .net.qa,
.name.qa & قطر.

Managed Web Services

Change Account ×

You're all set!

We have all the information we need to set up your account.

< BackFinish



Brandable Domains Forever!